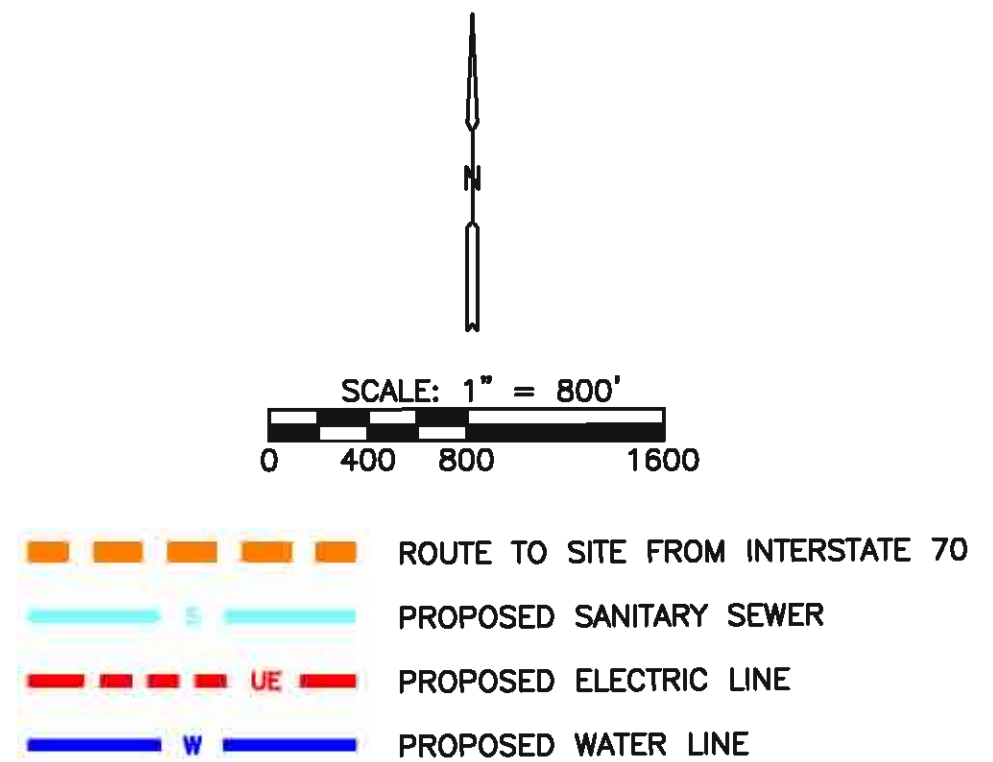
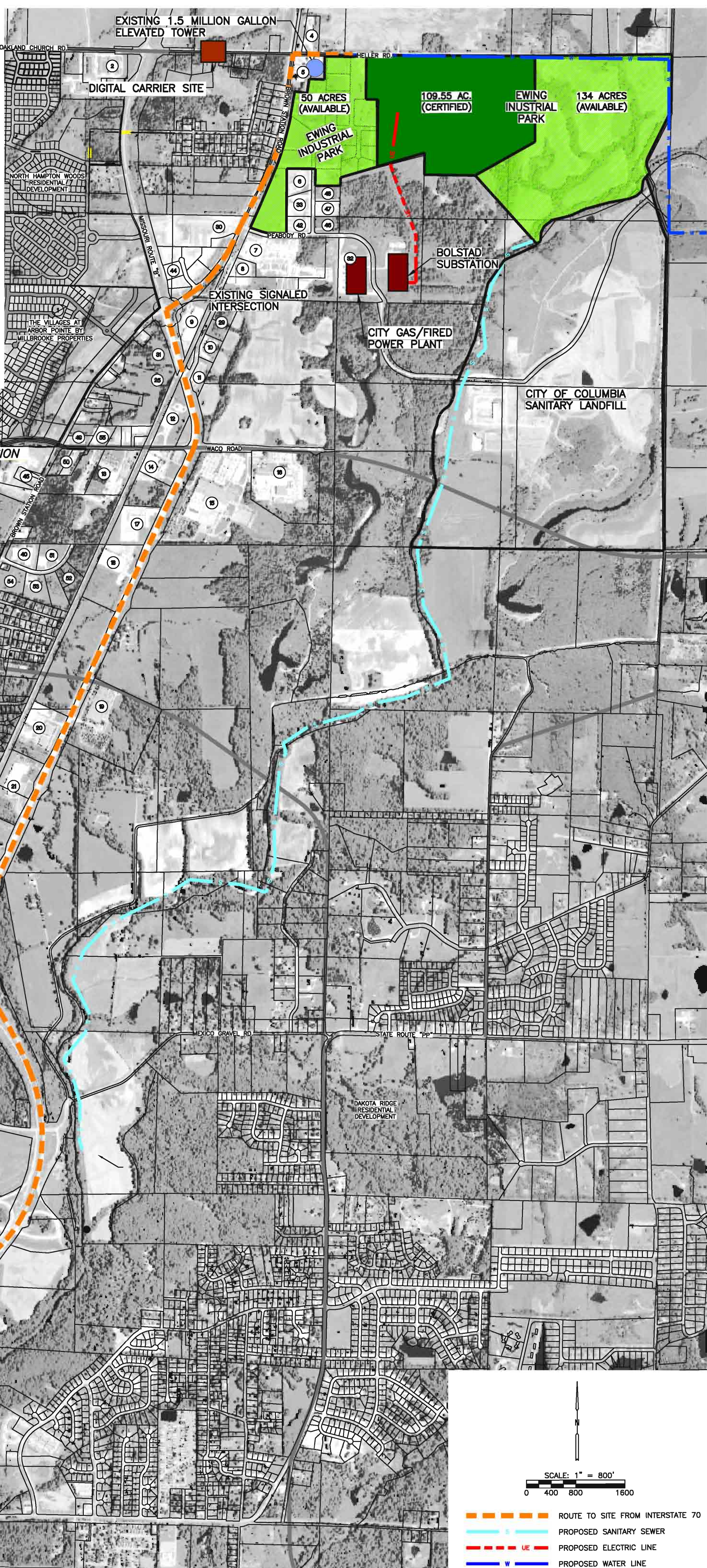


- 1 THE VILLAGES AT ARBOR POINT
- 2 NORTH HAMPTON VILLAGE
- 3 FAST LANE CONVENIENCE STORE
- 4 MACAFEE CONSTRUCTION
- 5 REW MATERIALS
- 6 ASHLEY FURNITURE WAREHOUSE
- 7 PW EAGLE, INC.
- 8 HONEYWELL INTERNATIONAL
- 9 BROAD BUILDING MATERIALS
- 10 GLAZER WHOLESALE DRUG
- 11 NAUSER DISTRIBUTING
- 12 HOODS BUILDING SUPPLY
- 13 AIKMAN COLLIERIES
- 14 ENVIRONMENTAL DYNAMICS
- 15 3M MANUFACTURING
- 16 OSCAR MEYER FOODS
- 17 FED EX FREIGHT
- 18 JOHNSON PRODUCTS
- 19 SQUARE D COMPANY
- 20 MID CITY LUMBER
- 21 QUAKER OATS MANUFACTURING
- 22 OAKLAND JUNIOR HIGH SCHOOL
- 23 COLUMBIA PRIDE SOCCER FIELDS
- 24 BOONE COUNTY FAIRGROUNDS
- 25 TRIPLE "L" STORAGE
- 26 BLUE RIDGE ELEMENTARY
- 27 LANGE MIDDLE SCHOOL
- 28 ALBERT OAKLAND PARK
- 29 CTX
- 30 COLUMBIA TRANSLOAD
- 31 HENDERSON IMPLEMENT
- 32 AMEREN U.E.
- 33 3M DISTRIBUTION WAREHOUSE
- 34 CROWN IMPLEMENT
- 35 SEASONS BROOKE ESTATES
- 36 INLAND TRUCK PARTS & ACCESSORIES
- 37 CASEY'S CONVENIENCE STORE
- 38 SEASONS BROOKE ESTATES
- 39 FIRST NATIONAL BANK & TRUST
- 40 TERRACON
- 41 FUTURE CITY OF COLUMBIA PARK
- 42 MILLBROOKE ENTERPRISES HEADQUARTERS
- 43 BOONE CO. SHERIFF'S FACILITY
- 44 CATFISH CORNER
- 45 BOONE CONSTRUCTION
- 46 BRANDON PACE CONSTRUCTION, A-1 CONTAINERS
- 47 J.C. DRYWALL, HEMME CONSTRUCTION, SWANSON FOODS
- 48 A-LECTRIC
- 49 KNERNSHIELD MANUFACTURING
- 50 KEITH CONTRACTING
- 51 PRECISION MECHANICAL
- 52 ALL SEASONS HEATING AND COOLING
- 53 LEBRUNS
- 54 LANDMARK BUILDERS
- 55 RESIDENTIAL DEVELOPMENT



- ROUTE TO SITE FROM INTERSTATE 70
- PROPOSED SANITARY SEWER
- PROPOSED ELECTRIC LINE
- PROPOSED WATER LINE

SHEET  
**1**

SCALE  
1" = 800'

JOB NUMBER  
08106.03

DATE  
APRIL 2009

**ALLSTATE CONSULTANTS**  
3312 LEMONE INDUSTRIAL BLVD.  
COLUMBIA, MO 65201  
(573) 875-8799

ENGINEERING • PLANNING • SURVEYING • GEOTECHNICAL • INVESTIGATIVE



REVISED:

**EWING INDUSTRIAL PARK  
LOCATION & INFRASTRUCTURE EXHIBIT**  
COLUMBIA, MISSOURI